



Scenic Buildings Brochure

**Restroom, concession, storage,
activity, and general purpose enclosed
buildings**

Why Choose Scenic Shelters

Scenic Shelters offers versatile designs and produces durable, solid stacked timber wall buildings from renewable and sustainably harvested Northern White Cedar for both public and private use.



Simple onsite construction

Timber wall components are preassembled and construction coded to assure a perfect fit, then dismantled and delivered to your job site. Basic construction skills and no special tools or equipment are needed (4,000 lb. capacity fork lift recommended). This system considerably reduces on-site installation time and costs.



Flexibility in design

Every building Scenic Shelters produces is designed and manufactured to meet the purchaser's specifications. All Scenic Shelters buildings can be modified to fit a project's needs. Numerous standard designs allow flexibility and customization for any requirement or budget. Scenic Shelters' adaptable designs, layouts, and appearances allow for a truly custom project.

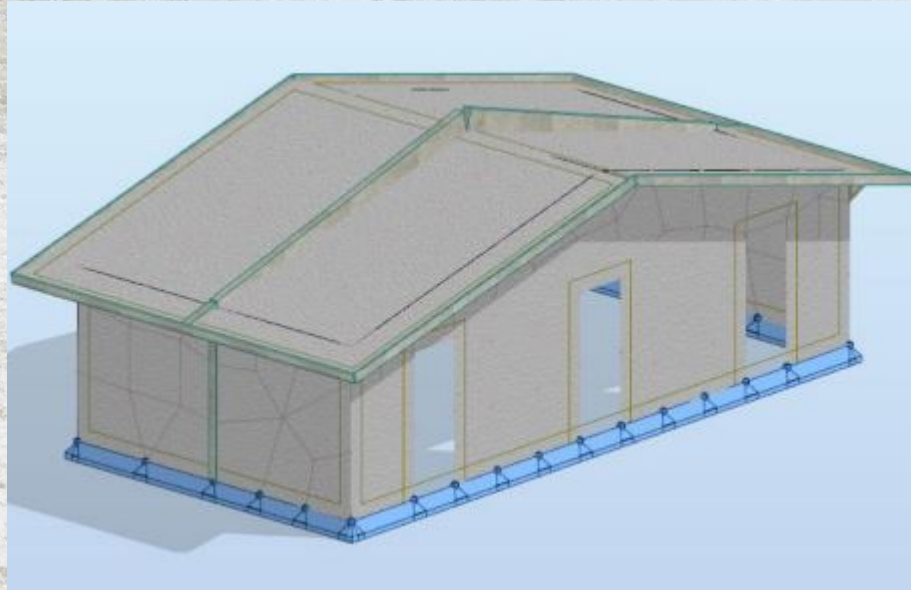
Northern White Cedar Benefits

- **Energy efficient**
- **Insect and rot resistant**
- **Low maintenance**
- **Low density makes it easy to transport and handle**
- **Excellent thermal insulator keeping buildings cool in the summer and reducing heating costs in the winter**
- **Far superior insulator to brick, concrete, and steel**
- **More sound damping capacity than most structural materials**
- **Properly finished and maintained, cedar will deliver decades of trouble-free service**
- **Renewable Michigan grown cedar**

Timber Wall Building Package

Engineering

- **All structures are pre-engineered to meet or exceed local building requirements**
- **Stamped and sealed drawings with calculations completed by a structural engineer to meet state and local building codes**
- **Restroom facilities meet ADA compliance requirements**



Interior Walls

- **Interior walls use standard 2" x 4" construction**
- **Fiberglass Reinforced Panel (FRP) in the restroom areas for easy cleaning**
- **Multipurpose areas are finished onsite with provided 1" x 8" cedar or pine tongue and groove boards**
- **Trim package included for base, corners, ceiling, doors, windows, and vents**



Timber Wall Building Package

Exterior Walls, Roofing/Roofline, Doors, and Windows

- Milled from Northern White Cedar for natural beauty, durability, and structural integrity
- Nominal solid 4" x 8" double tongue and groove timbers
- Predrilled starter holes for 10" coated screws speed construction of solid timbers
- Timbers are precut to length assuring staggered end joints and end matched for alignment, preassembled and construction coded to ensure an easy field fit
- Treated bottom plate with a sill seal and energy seal for all courses
- Trim package included for base, corners, and roofline
- #1 grade, kiln dried 2" x 6" SYP roof decking
- 2" x 8" cedar fascia for roofline
- 30-year architectural fiberglass shingle package
- Laminated SYP beams with Port Orford Cedar columns and 24" overhang
- Commercial grade doors and windows shipped to the job site ready for installation
- Primed steel doors with 3-part frame
- Standard hardware includes handles, locks, hinges, closer, and sweep



Timber Wall Building Package

Scenic Shelters offers plumbing and electrical fixture packages for all building kits. These packages provide the fixtures needed to complete the project. They do not include the piping, wiring, conduit, or MEP design plans. The packages need to be installed by a local plumbing or electrical contractor. HVAC can be added to buildings using a local HVAC contractor.

Plumbing Fixture Package (plan dependent)

- **Choice of stainless steel or vitreous china fixtures**
- **Floor mounted toilets and valves**
- **Urinals and valves**
- **Restroom toilet partitions**
- **Sinks with ADA shield**
- **Tankless water heaters**
- **Wall hydrant**
- **Grab bars**
- **Mirrors**
- **Toilet paper dispensers**
- **Paper towel dispensers**
- **Waste receptacles**
- **Sanitary disposal**
- **Soap dispenser**
- **Signs**

Optional Fixtures: Touchless valves, electric hand dryer, drinking fountain, baby changing station, wall mounted toilets, and bottle filling station

Electrical Fixture Package (plan dependent)

- **Light fixtures, bases, and lamps**
- **Outlets or GFCI outlets**
- **Junction boxes and switches**
- **Breaker boxes and breakers**
- **Overhead light sensors and controls**

Optional Features

Steel Columns, Doors and Windows, Display Case, Roll-up Concession Window, Garage Doors, Metal Roofing, Cupola, Factory Finish, Lightning Protection, Customization, Insulation, and Site Amenities



Site Preparation

Upon Structure Delivery, Customer Needs to Provide:

- **4,000lb lift capacity fork lift for unloading the delivery truck**
- **Completed site work and excavation**
- **Supply pipes, drain pipes, electrical wiring, and MEP if required by local code**
- **Completed utility supply**
- **Completed concrete footing and walls per plan**
- **Construction rough in and finish**
- **Plumbing and electrical contractor for utility installation**
- **Onsite wood sealer material and application labor**



**Concrete Footings,
Utility Supply, and
Cement Floor**



Building Construction



Finished Building

Timber Wall Building Timeline



Enjoy the View!



Scenic SHELTERS

855.544.8439

www.scenicshelters.com

info@scenicshelters.com

7125 Headley St. SE #795

Ada, MI 49301